

# Palm OTDR

## MDR-100/200



Palm OTDR MDR-100 is designed to meet a wide variety of requirements for the optical fiber measurement in short and medium distance.

It has outstanding performance at the event dead zone and dynamic range. The built-in VFL can guarantee the fault detection for all range optical fibers.

### Key Features

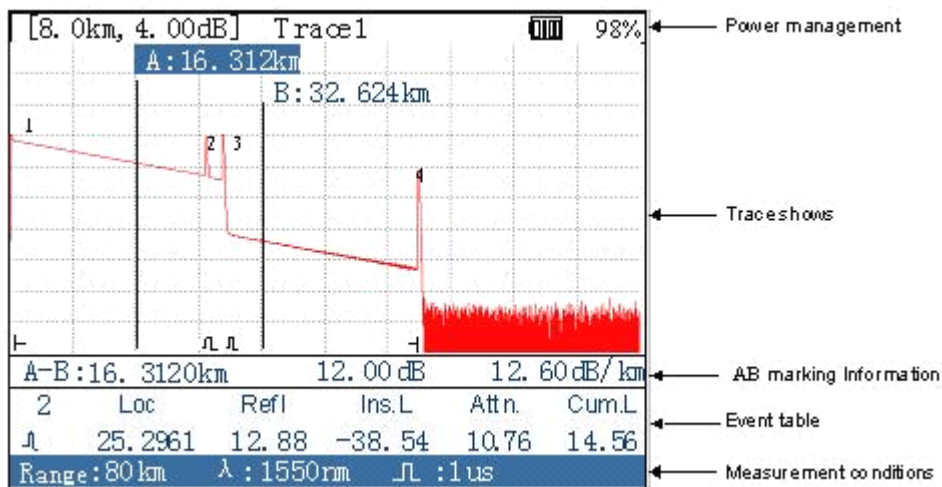
- Convenient one-button testing
- High speed signal processing, less test time and fast analysis
- Color TFT LCD
- USB port connect to PC
- Input optical signal auto detection and self-protection
- Built-in VFL

### Applications

- The installation and maintenance for AN(access network) optical cables
- The installation and maintenance for LAN(local area networks)
- The installation and maintenance for FTTX
- The installation and maintenance for cable TV networks
- The installation and maintenance for private optical fiber networks

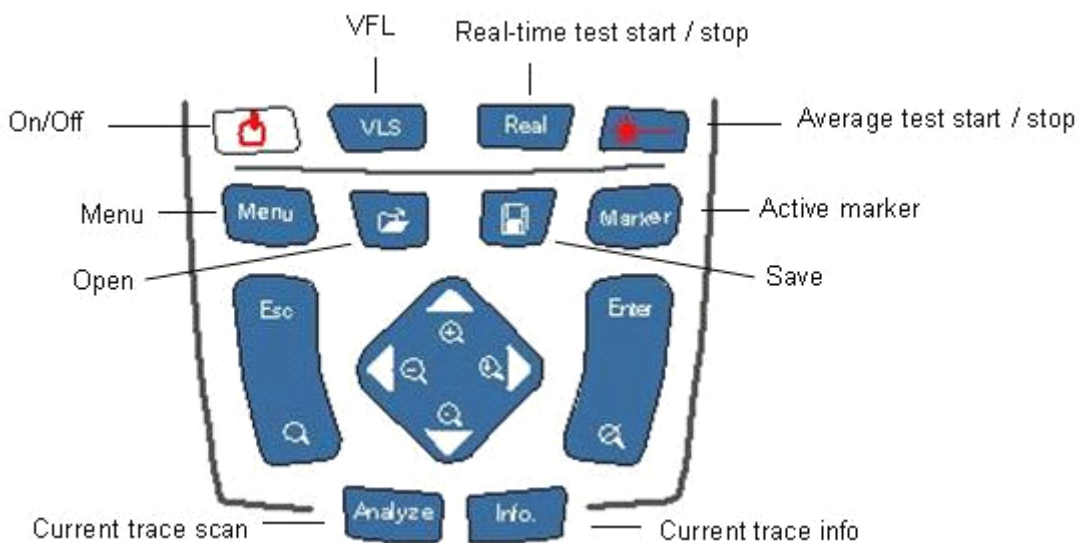
## The friendly User Interface

The friendly user interface shows details of the event list in a clear and big screen. Coordinated with the distinctive designed keyboard operation, displaying of event trace in a clear and brief way for trace zooming in or zooming out.

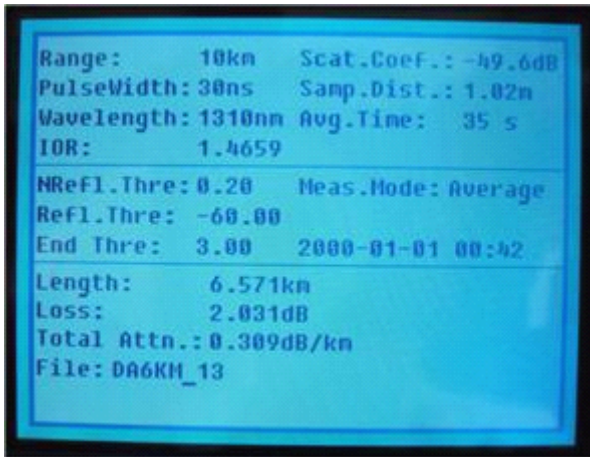


## The Distinctive Keyboard Design

The distinctive designed keyboard is easy to use especially for ones without the professional education background.



Trace Info

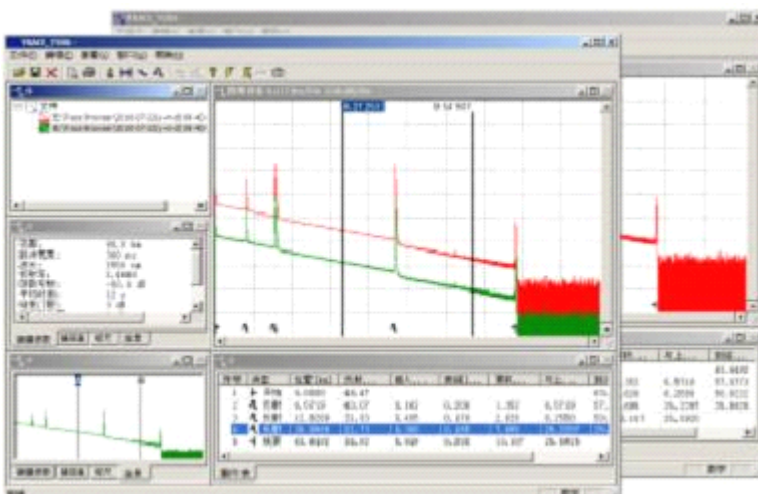


Top Panel



The powerful Trace Viewer software function: trace management, trace print and trace browse. The Trace Viewer software based on windows system is specially designed for off-line data process.

- ◆ The powerful batch processing function  
The Trace batch processing function release user from mass repeated trace management works.
- ◆ Event table maintenance  
Add,delete or modify any event of event table manually leading to perfect optical cable report.



## Specification

Wavelength	1310±20nm / 1550±20nm
Dynamic Range	MDR-100: 32dB / 30dB MDR-200: 37dB / 35dB
Event Dead Zone	< 1.5m
Attenuation Dead Zone	< 8.0m
Pulse Width	5ns, 10ns, 30ns, 100ns, 300ns, 1.0us, 2.5us, 10us
Distance uncertainty	±(1.0m ± 0.005% * testing distance ± resolution)
Linearity	±0.05dB/ dB
Loss Resolution	0.001dB
Distance Resolution	0.1m
Connector	FC (or SC or ST)
VFL	650±20nm, <1dBm, FC/UPC
Data Storage	300 traces
Display	3.5 inch TFT color LCD
Interface	USB
Battery	Built-in rechargeable battery
Working Time	>10 hrs (Bellcore TR-NWT-001138)
Operating Temp.	-10 -- +40 °C, < 80%RH
Storage Temp.	-30 -- +60 °C, < 80%RH
Net Weight	0.9 Kg
Dimension	230mm×120mm×60mm

## Standard Accessories

OTDR	1
AC/DC adapter	1
Operation guide	1
Carrying bag	1
USB cable	1
Software CD	1
Calibration certificate	1